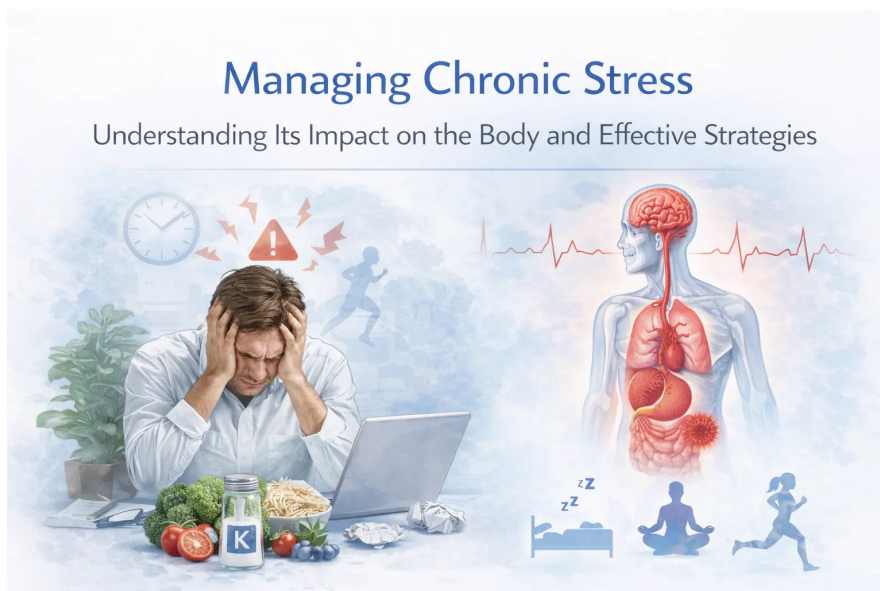


# Managing Chronic Stress: Understanding Its Impact on the Body and Negative effects on the mind



Stress is a normal part of life, and it is something that we all experience from time to time. However, when stress becomes chronic, it can have serious consequences for our health and well-being. Chronic stress has been linked to a variety of health problems, including heart disease, high blood pressure, diabetes, and depression. In fact, some experts believe that chronic stress is one of the leading causes of preventable death in the world today.

Despite its widespread impact, chronic stress is often ignored or overlooked. Many people do not realize the toll that chronic stress can take on the body and mind, or they may feel powerless to do anything about it. However, there are many effective ways to manage chronic stress and reduce its impact on our health and well-being. In this article, we will explore the causes and consequences of chronic stress, as well as practical strategies for managing it effectively. Whether you are dealing with chronic stress yourself or simply want to better understand this important issue, read on to learn more about the silent killer and how to combat it.

## What is Chronic Stress and How Does it Affect the Body?

Chronic stress is a type of stress that occurs when an individual experiences prolonged or repeated exposure to stressful situations. Unlike acute stress, which is a short-term response to a particular event, chronic stress can last for weeks, months, or even years. Chronic stress can take a toll on the body and mind, leading to a range of physical and psychological symptoms.

At a physiological level, chronic stress triggers the release of stress hormones, such as cortisol and adrenaline. These hormones prepare the body for a "fight or flight" response, which can be helpful in short bursts but can cause damage when prolonged. Chronic stress can lead to increased inflammation, which has been linked to a variety of chronic diseases, including heart disease, diabetes, and cancer.

In addition to its effects on physical health, chronic stress can also impact mental health. It can lead to feelings of anxiety, depression, and burnout, and can make it more difficult to manage daily stressors. Chronic stress can also affect cognitive function, leading to memory problems and difficulty concentrating.

Overall, chronic stress can have a profound impact on the body and mind. In the following sections, we will explore the various ways chronic stress can affect the body, as well as strategies for managing it effectively.

### The Link Between Chronic Stress and Chronic Disease

Chronic stress can be a significant risk factor for the development of chronic diseases such as heart disease, diabetes, and cancer. The link between chronic stress and chronic disease is complex and multifaceted, involving both physiological and psychological factors.

One of the key ways that chronic stress can contribute to chronic disease is through its effects on the cardiovascular system. Chronic stress can lead to increased inflammation, which can damage blood vessels and increase the risk of heart disease. Chronic stress can also cause the release of stress hormones, such as cortisol, which can increase blood pressure and cholesterol levels, further increasing the risk of heart disease.

Chronic stress can also contribute to the development of type 2 diabetes. Stress hormones such as cortisol can interfere with the body's ability to regulate blood sugar, leading to insulin resistance and elevated blood glucose levels. Chronic stress can also promote the accumulation of visceral fat, which is associated with an increased risk of type 2 diabetes.

Additionally, chronic stress has been linked to the development of certain types of cancer. Stress can weaken the immune system, making it more difficult for the body to fight off cancer cells. Chronic stress can also promote the growth and spread of cancer cells through its effects on inflammation and hormone levels.

### The Physical and Psychological Symptoms of Chronic Stress

Chronic stress can have a wide range of physical and psychological symptoms, which can vary from person to person. Some people may experience only a few symptoms, while others may experience many. It's important to be aware of these symptoms, as they can be signs that chronic stress is taking a toll on your mind and body.

Physical symptoms of chronic stress can include

- Headaches: Chronic stress can cause tension headaches or migraines. - Muscle tension and pain: Chronic stress can cause muscle tension and pain, particularly in the neck, shoulders, and back. - Digestive issues: Chronic stress can cause stomach upset, diarrhea, constipation, and other digestive issues. - Fatigue: Chronic stress can lead to feelings of exhaustion and fatigue, even when you get enough sleep. - Sleep disturbances: Chronic stress can disrupt sleep patterns, leading to insomnia or other sleep disorders. - Weakened immune system: Chronic stress can weaken the immune system, making you more susceptible to infections and illnesses. - Changes in appetite: Chronic stress can cause changes in appetite, leading to overeating or undereating.

Psychological symptoms of chronic stress can include

- Anxiety: Chronic stress can lead to feelings of anxiety, nervousness, and worry. - Depression: Chronic stress can contribute to the development of depression or worsen existing depression symptoms. - Irritability: Chronic stress can make you more easily irritated and short-tempered. - Difficulty concentrating: Chronic stress can make it difficult to concentrate or focus on tasks. - Memory problems: Chronic stress can cause memory problems, particularly short-term memory. - Negative self-talk: Chronic stress can lead to negative self-talk and a sense of hopelessness. - Social withdrawal: Chronic stress can cause you to withdraw from social activities and relationships.

How Chronic Stress Affects the Brain and Impacts Mental Health

Chronic stress can have a significant impact on the brain, leading to changes in brain structure and function, as well as an increased risk of mental health disorders.

One of the key ways that chronic stress affects the brain is through its effects on the hippocampus, a region of the brain that plays a crucial role in memory and learning. Chronic stress can cause the hippocampus to shrink, leading to memory problems and difficulty learning new information.

Chronic stress can also lead to changes in the prefrontal cortex, a region of the brain that is involved in decision-making, attention, and impulse control. Chronic stress can make it more difficult to make decisions and regulate emotions, leading to impulsivity and poor decision-making.

Furthermore, chronic stress can increase the risk of mental health disorders such as anxiety and depression. Chronic stress can lead to changes in the levels of neurotransmitters such as serotonin and dopamine, which are involved in regulating mood and emotions. These changes can contribute to the development of mental health disorders and exacerbate existing symptoms.

In addition, chronic stress can also affect the body's stress response system, leading to an overactive stress response and increased levels of stress hormones such as cortisol. This can further exacerbate the impact of chronic stress on the brain and mental health.

## Cortisol and Chronic Stress: Understanding the Role of Cortisol in Chronic Stress and Its Effects on the Body

Cortisol is a hormone that is produced by the adrenal glands in response to stress. It plays a crucial role in the body's stress response system, helping to regulate blood sugar levels, blood pressure, and immune function.

In the short term, cortisol is an important hormone that helps the body to cope with stress. It provides the body with a burst of energy, increases heart rate and blood pressure, and suppresses non-essential functions such as digestion and the immune system.

However, when cortisol levels remain elevated over a long period of time, as is the case in chronic stress, it can have negative effects on the body. Chronically elevated cortisol levels can contribute to the development of a number of health problems, including:

- Weight gain: Chronically elevated cortisol levels can contribute to weight gain, particularly around the abdomen.
- High blood pressure: Chronically elevated cortisol levels can lead to high blood pressure, increasing the risk of heart disease and stroke.
- Suppressed immune function: Chronically elevated cortisol levels can suppress the immune system, making it more difficult for the body to fight off infections and illnesses.
- Insulin resistance: Chronically elevated cortisol levels can contribute to the development of insulin resistance, increasing the risk of type 2 diabetes.
- Sleep disturbances: Chronically elevated cortisol levels can disrupt sleep patterns, leading to insomnia or other sleep disorders.

In addition, chronically elevated cortisol levels can also have negative effects on mood and cognitive function. It can contribute to feelings of anxiety and depression, as well as memory problems and difficulty concentrating.

In summary, cortisol is an important hormone that plays a crucial role in the body's stress response system. However, chronically elevated cortisol levels, as is the case in chronic stress, can have negative effects on the body and contribute to the development of a number of health problems. In the following sections, we will explore strategies for managing cortisol levels and reducing the impact of chronic stress on the body.

### Understanding the Stress Response System and How it Impacts Health

The stress response system is a complex system that helps the body to cope with stress. When the body is exposed to a stressful situation, the hypothalamus, a region of the brain, signals the release of a hormone called corticotropin-releasing hormone (CRH). CRH then signals the pituitary gland to release another hormone called adrenocorticotropic hormone (ACTH), which in turn signals the adrenal glands to release cortisol and other stress hormones.

This stress response system is designed to help the body cope with short-term stressors, such as a sudden danger or threat. However, when stress becomes chronic, this system can have negative effects on the body.

Chronic stress can lead to an overactive stress response system, causing chronically elevated cortisol levels and other stress hormones. This can contribute to a range of health problems, including:

- Cardiovascular disease: Chronic stress can increase the risk of cardiovascular disease by contributing to high blood pressure, heart disease, and stroke.
- Metabolic disorders: Chronic stress can contribute to metabolic disorders such as insulin resistance and type 2 diabetes.
- Suppressed immune function: Chronic stress can suppress the immune system, making it more difficult for the body to fight off infections and illnesses.
- Mental health problems: Chronic stress can contribute to the development of mental health problems such as anxiety and depression.

Furthermore, chronic stress can also have negative effects on other aspects of health, such as sleep, digestion, and reproductive function.

### The Benefits of Mindfulness-Based Stress Reduction (MBSR) for Chronic Stress Management

Mindfulness-Based Stress Reduction (MBSR) is a type of mindfulness training program that has been shown to be effective in reducing chronic stress and its negative effects on the body and mind.

MBSR is a structured, eight-week program that includes mindfulness meditation, gentle yoga, and body awareness practices. The program aims to help participants develop a greater awareness of their thoughts, emotions, and physical sensations, and to learn how to respond to them in a more adaptive way.

Research has shown that MBSR can have a number of benefits for chronic stress management, including:

- Reduced cortisol levels: MBSR has been shown to reduce cortisol levels in individuals with chronic stress, helping to lower the negative impact of chronic stress on the body.
- Improved immune function: MBSR has been shown to improve immune function in individuals with chronic stress, helping to boost the body's ability to fight off infections and illnesses.
- Reduced anxiety and depression: MBSR has been shown to reduce symptoms of anxiety and depression, which are often associated with chronic stress.
- Improved sleep: MBSR has been shown to improve sleep quality in individuals with chronic stress, helping to reduce the negative impact of chronic stress on sleep patterns.

In addition, MBSR can also have other benefits for overall well-being, such as increased self-awareness, improved mood, and better coping skills.

To participate in an MBSR program, individuals can find a trained MBSR teacher in their local area or take an online course. The program typically involves weekly group meetings and daily home practice, with the goal of developing a daily mindfulness practice that can be integrated into daily life.

### The Importance of Exercise and Physical Activity in Reducing Chronic Stress

Exercise and physical activity are important tools for managing chronic stress. Not only do they help to improve physical health, but they also have a positive impact on mental health and overall well-being.

Here are some of the key ways that exercise and physical activity can help to reduce chronic stress:

- Reducing cortisol levels: Exercise has been shown to reduce levels of the stress hormone cortisol, which can have a positive impact on the body's stress response system.
- Improving mood: Exercise has been shown to release endorphins, which can help to improve mood and reduce symptoms of anxiety and depression.
- Boosting self-esteem: Regular exercise can improve self-esteem and confidence, which can help individuals to better cope with stress.
- Enhancing sleep quality: Exercise has been shown to improve sleep quality, which is important for managing stress and promoting overall health.
- Providing a sense of control: Engaging in physical activity can provide a sense of control over one's life and help individuals to feel more empowered to manage stress.

Incorporating physical activity into your daily routine can be as simple as taking a brisk walk, practicing yoga, or participating in a group fitness class. Aim to get at least 30 minutes of moderate-intensity exercise on most days of the week, and remember that any form of physical activity is better than none.

### The Role of Nutrition and a Healthy Diet in Reducing Chronic Stress

Nutrition and a healthy diet play a critical role in managing chronic stress. A diet that is high in nutrients and low in processed foods and sugar can help to reduce inflammation and promote overall health, which can in turn help to manage chronic stress. Here are some examples of diets that can help to reduce chronic stress:

- The Mediterranean diet: The Mediterranean diet is a balanced and nutritious diet that is rich in fruits, vegetables, whole grains, lean protein, and healthy fats. It has been shown to reduce inflammation and improve heart health, which can help to manage chronic stress.
- The DASH diet: The Dietary Approaches to Stop Hypertension (DASH) diet is a diet that is rich in fruits, vegetables, whole grains, low-fat dairy, and lean protein. It is low in saturated and trans fats and has been shown to reduce blood pressure and improve overall health.
- The Anti-Inflammatory diet: The Anti-Inflammatory diet is a diet that is rich in whole, nutrient-dense foods that are high in antioxidants and anti-inflammatory compounds. It focuses on reducing inflammation in the body, which can help to manage chronic stress.
- The Whole30 diet: The Whole30 diet is a 30-day elimination diet that eliminates processed foods, sugar, alcohol, and grains. It focuses on whole, nutrient-dense foods and has been shown to reduce inflammation and improve overall health.
- The Plant-Based diet: A plant-based diet is a diet that is rich in fruits, vegetables, whole grains, and plant-based protein sources such as beans, nuts, and seeds. It is low in saturated fat and has been shown to reduce inflammation and improve heart health.

Incorporating a healthy diet into your daily routine can help to manage chronic stress and promote overall health. Remember to choose whole, nutrient-dense foods and limit processed foods and sugar. By making small changes to your diet, you can make a big impact on your overall health and well-being.

### The Benefits of Social Support and Relationships in Managing Chronic Stress

Social support and relationships can play a vital role in managing chronic stress. Having strong social connections can help to reduce feelings of isolation, loneliness, and stress, and can also provide a sense of belonging and purpose. Here are some of the benefits of social support and relationships:

- Reduced stress: Studies have shown that social support can help to reduce stress levels and improve overall well-being.
- Improved mental health: Social support can also help to improve mental health by reducing symptoms of anxiety and depression.
- Increased resilience: Strong social connections can help to increase resilience and the ability to cope with stressors.
- Enhanced physical health: Social support has been shown to improve physical health by reducing inflammation and promoting healthy behaviors.
- Longer lifespan: Research has found that social support and strong relationships are associated with a longer lifespan.

Incorporating social support and relationships into your life can help to manage chronic stress and improve overall health and well-being. This can include spending time with loved ones, joining social groups or clubs, volunteering, or seeking support from a therapist or support group. Remember that building strong social connections takes time and effort, but the benefits are well worth it.

### The Importance of Sleep and Rest for Chronic Stress Management

Sleep and rest are crucial components of managing chronic stress. When we are stressed, our bodies release hormones that can make it difficult to fall asleep and stay asleep, leading to a cycle of stress and sleep deprivation. Here are some ways in which sleep and rest can help manage chronic stress:

- Stress Reduction: Sleep and rest can help to reduce stress levels and improve overall well-being.
- Improved Mood: Getting enough sleep and rest can help to improve mood and reduce feelings of irritability and anxiety.
- Increased Resilience: Adequate rest can increase resilience and the ability to cope with stressors.
- Enhanced Physical Health: Sleep and rest have been shown to improve physical health by reducing inflammation and promoting healing.
- Improved Cognitive Function: Getting enough rest and sleep is essential for cognitive function, including memory, attention, and decision-making.

To improve sleep and rest, consider establishing a regular sleep routine, creating a relaxing sleep environment, and avoiding screens before bedtime. Additionally, practicing relaxation techniques such as deep breathing, meditation, or yoga can help to promote rest and relaxation. Remember that sleep and rest are important for managing chronic stress, and making them a priority can have significant benefits for overall health and well-being.

### Strategies for Incorporating Self-Care into Daily Life to Reduce Chronic Stress

- Prioritize sleep: Aim to get 7-9 hours of sleep each night, and establish a regular sleep routine to help promote restful sleep. - Eat a healthy diet: Focus on whole, nutrient-dense foods such as fruits, vegetables, lean proteins, and healthy fats, and avoid processed and sugary foods. - Exercise regularly: Incorporate physical activity into your daily routine, whether it's going for a walk, taking a fitness class, or participating in a team sport. - Practice relaxation techniques: Consider mindfulness meditation, deep breathing exercises, or yoga to help reduce stress levels. - Engage in hobbies and activities you enjoy: Make time for activities that bring you joy, such as reading, gardening, or playing music. - Spend time with loved ones: Prioritize social connections and spend time with friends and family, whether it's a phone call, video chat, or in-person visit. - Take breaks: Allow yourself time to rest and recharge throughout the day, whether it's taking a short walk, reading a book, or simply sitting quietly. - Seek support: Don't be afraid to reach out for support when needed, whether it's from a therapist, support group, or trusted friend.

### Conclusion

Chronic stress is a pervasive issue that affects many people in today's fast-paced world. It can have serious physical and mental health consequences if left unmanaged. However, the good news is that there are effective strategies for managing chronic stress and reducing its impact on the body and mind.

One important strategy is to incorporate self-care into daily life. Prioritizing sleep, exercise, healthy eating, and relaxation techniques can all help to reduce stress levels and promote overall well-being. Engaging in hobbies and spending time with loved ones can also provide a much-needed break from the demands of daily life.

Other effective strategies for managing chronic stress include seeking support from a therapist or support group, practicing mindfulness-based stress reduction techniques, and focusing on gratitude and positive thinking.

It's important to remember that chronic stress is a serious issue that should not be ignored. By taking steps to manage stress and prioritize self-care, individuals can improve their physical and mental health and reduce the impact of chronic stress on their lives.

### References

- Aalami M, Jafarnejad F, Modarres Gharavi M. The effects of progressive muscular relaxation and breathing control technique on blood pressure during pregnancy. *Iranian Journal of Nursing and Midwifery Research*. 2016;21(3):331-336. - Mottillo S, Filion KB, Genest J, Joseph L, Pilote L, Poirier P, Rinfret S, Schiffrin EL, Eisenberg MJ. The metabolic syndrome and cardiovascular risk a systematic review and meta-analysis. *Journal of the American College of Cardiology*.2010;56:1113–1132. doi: 10.1016/j.jacc.2010.05.034. [PubMed] [CrossRef] [Google Scholar] - 2. Bech P. In *Clinical Psychometrics*. 1st Edn, 2012. Oxford, UK: Wiley Blackwell. - 3. Holmes ME, Ekkekakis P, Eisenmann JC. The physical activity, stress and metabolic syndrome triangle: a guide to unfamiliar territory for the obesity researcher. *Obesity Reviews*.2010;11:492–507. doi: 10.1111/j.1467-789X.2009.00680.x. [PubMed] [CrossRef] [Google Scholar] - 4. Goldstein DS, McEwen B. Allostasis, homeostats, and the nature of stress. *Stress*.2002;5:55–58. doi: 10.1080/102538902900012345. [PubMed] [CrossRef] [Google Scholar] - 5. van-Holland BJ, Frings-Dresen MH, Sluiter JK. Measuring short-term and long-term physiological stress effects by cortisol reactivity in saliva and hair. *International Archives of Occupational and Environmental Health*.2012;85:849–852. doi: 10.1007/s00420-011-0727-3. [PMC free article] [PubMed] [CrossRef] [Google Scholar] - 6. Schubert C, Lambertz M, Nelesen RA, Bardwell W, Choi JB, Dimsdale JE. Effects of stress on heart rate complexity – a comparison between short-term and chronic stress. *Biological Psychology*.2009;80:325–332. doi: 10.1016/j.biopsycho.2008.11.005. [PMC free article] [PubMed] [CrossRef] [Google Scholar] - 7. Raikonen K, Matthews KA, Kuller LH. Depressive symptoms and stressful life events predict metabolic syndrome among middle-aged women: a comparison of World Health Organization, Adult Treatment Panel III, and International Diabetes Foundation definitions. *Diabetes Care*.2007;30:872–877. doi: 10.2337/dc06-1857. [PubMed] [CrossRef] [Google Scholar]

**Source URL:**

<https://vitaltrack.net/blog/managing-chronic-stress-understanding-its-impact-on-the-body-and-effective/>



# VitalTrack

Bienestar y seguimiento de salud



## Estrés crónico

### Cómo afecta a tu cuerpo y qué puedes hacer

Resumen visual basado en el blog de VitalTrack

#### 1 ¿Qué es?



El estrés crónico aparece cuando el cuerpo permanece expuesto a tensión durante semanas, meses o más. Mantener activada la respuesta de estrés durante demasiado tiempo puede afectar tanto a la salud física como a la salud mental.

#### 2 Cómo impacta al cuerpo



**Corazón y presión arterial:** puede aumentar el riesgo de hipertensión y enfermedad cardiovascular.



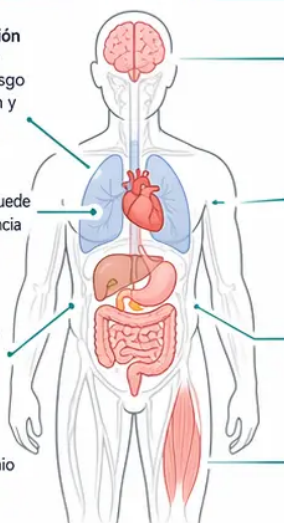
**Metabolismo:** puede favorecer resistencia a la insulina y diabetes tipo 2.



**Sistema inmune:** puede debilitar las defensas.



**Sueño:** puede provocar insomnio o descanso de mala calidad.



**Cerebro:** puede afectar memoria, concentración y toma de decisiones.



**Estado de ánimo:** puede aumentar ansiedad, depresión e irritabilidad.



**Digestión:** puede causar molestias digestivas.



**Músculos:** puede generar tensión y dolor.

#### 3 Síntomas frecuentes



##### Físicos

- Dolor de cabeza
- Tensión muscular
- Fatiga
- Problemas digestivos
- Cambios en el apetito
- Alteraciones del sueño



##### Psicológicos

- Ansiedad
- Depresión
- Irritabilidad
- Dificultad para concentrarse
- Problemas de memoria
- Aislamiento social

#### 4 El papel del cortisol



El cortisol ayuda al cuerpo a responder al estrés en el corto plazo. Pero cuando permanece elevado durante mucho tiempo, puede alterar el sueño, la presión arterial, el azúcar en sangre y el estado de ánimo.

#### 5 Qué ayuda de verdad



##### Mindfulness / MBSR

Puede reducir el cortisol y mejorar el bienestar.



##### Ejercicio regular

Ayuda a mejorar el ánimo, el sueño y la respuesta al estrés.



##### Alimentación equilibrada

Una dieta rica en alimentos reales favorece la salud integral.



##### Dormir mejor

El descanso adecuado ayuda a recuperar equilibrio físico y mental.



##### Apoyo profesional y social

Pedir ayuda también forma parte del autocuidado.



Pequeños hábitos, gran diferencia.

Sigue tu bienestar con VitalTrack · [vitaltrack.net](https://vitaltrack.net)

